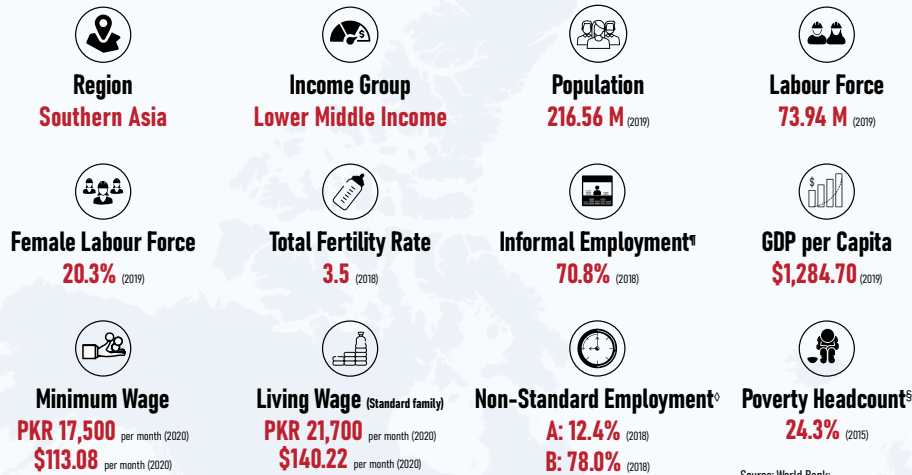
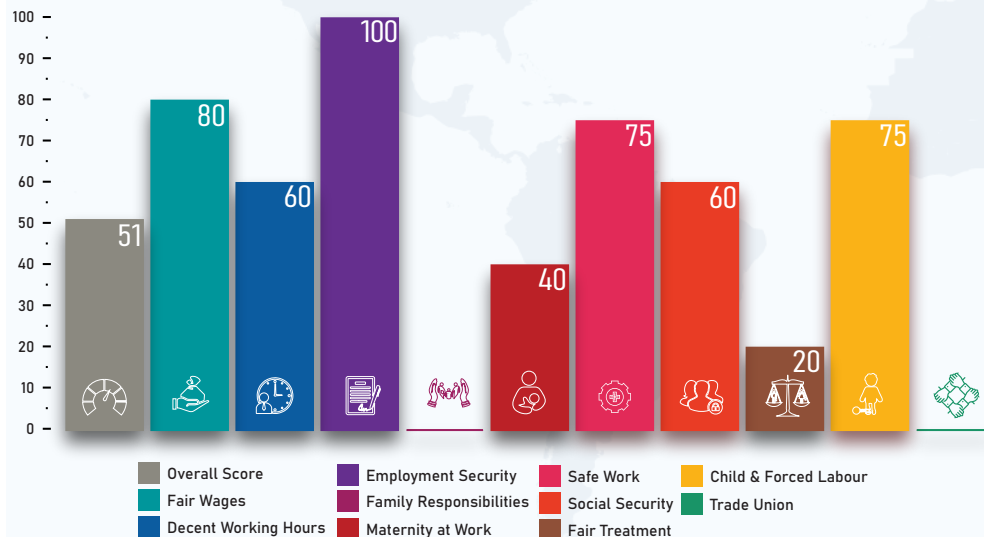


## QUICK FACTS



Source: World Bank; International Labour Organization; WageIndicator Living Wages Database

## LEGISLATIVE PERFORMANCE



### Indicator\*

#### 1. Fair Wages

- Minimum wage (statutory or negotiated) ✓
- Regular wage ✓
- Overtime premium ( $\geq 125\%$ ) ✓
- Weekly rest work compensation (time-off) ✓
- Night work premium ✗

#### 2. Decent Working Hours

- General working hours ( $\leq 48$  hours per week) ✓
- Maximum working hours ( $\leq 56$  hours per week) ✗
- Weekly rest ( $\geq 24$  hours) ✓
- Paid public holidays ✓
- Annual leave ( $\geq 3$  working weeks) ✗

#### 3. Employment Security

- Written employment contract ✓
- Fixed term contract ( $\leq 5$  years) ✓
- Probation period ( $\leq 3$  months) ✓
- Termination notice period (1 month) ✓
- Severance pay ( $\geq 14$  days per year of service) ✓

#### 4. Family Responsibilities

- Parental leave ✗
- Paternity leave ( $\geq 1$  week) ✗
- Flexible working arrangements ✗
- Nursing breaks ✗

#### 5. Maternity at Work

- Prohibition on inquiring about pregnancy ✗
- Maternity leave ( $\geq 14$  weeks) ✗
- Cash maternity benefits ( $\geq 66.67\%$  of former wage) ✓
- Source of maternity benefits (social insurance or state financing) ✓
- Protection from dismissals (pregnancy/maternity) ✗

### Score\*

80

- ✓
- ✓
- ✓
- ✓
- ✗

60

- ✓
- ✗
- ✓
- ✓
- ✗

100

- ✓
- ✓
- ✓
- ✓
- ✓

0

- ✗
- ✗
- ✗
- ✗

40

- ✗
- ✗
- ✓
- ✓
- ✗

### Indicator

#### 6. Safe Work

- Personal protective equipment (free of cost) ✓
- Training on health and safety ✓
- Restriction on work (prejudicial to health of mother or child) ✗
- Employment injury benefits ✓

#### 7. Social Security

- Old age pension ✓
- Survivors' pension ✓
- Unemployment benefits ✗
- Sickness benefits ( $\geq 6$  months) ✗
- Invalidity benefits ✓

#### 8. Fair Treatment

- Prohibition of employment discrimination ✗
- Equal remuneration for work of equal value ✗
- Prohibition of sexual harassment ✓
- Absence of restrictions on women's employment ✗
- Basic labour protections for gig workers ✗

#### 9. Child and Forced Labour

- Prohibition on child labour ( $\leq 15$  years) ✓
- Age (employment entry  $\geq$  compulsory schooling) ✗
- Prohibition on hazardous work for under 18 ✓
- Prohibition on forced labour ✓

#### 10. Trade Union

- Right to unionise ✗
- Right to collective bargaining ✗
- Right to strike ✗
- Prohibition on replacing striking workers ✗

### Score

75

- ✓
- ✓
- ✗
- ✓

60

- ✓
- ✓
- ✗
- ✗
- ✓

20

- ✗
- ✗
- ✓
- ✗
- ✗

75

- ✓
- ✗
- ✓
- ✓

0

- ✗
- ✗
- ✗
- ✗

◇ Non-Standard Employment has been defined as Part-Time Employment (A) and Temporary Employment (B)  
 § Proportion of population living below the national poverty line (%), as measured under SDG 1.2.1  
 ¶ Share of informal employment in non-agriculture (%), as measured under SDG 8.3.1