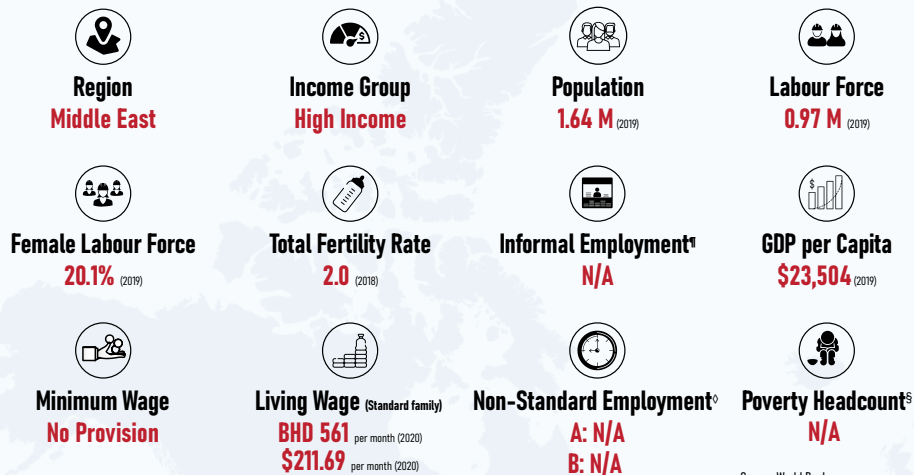
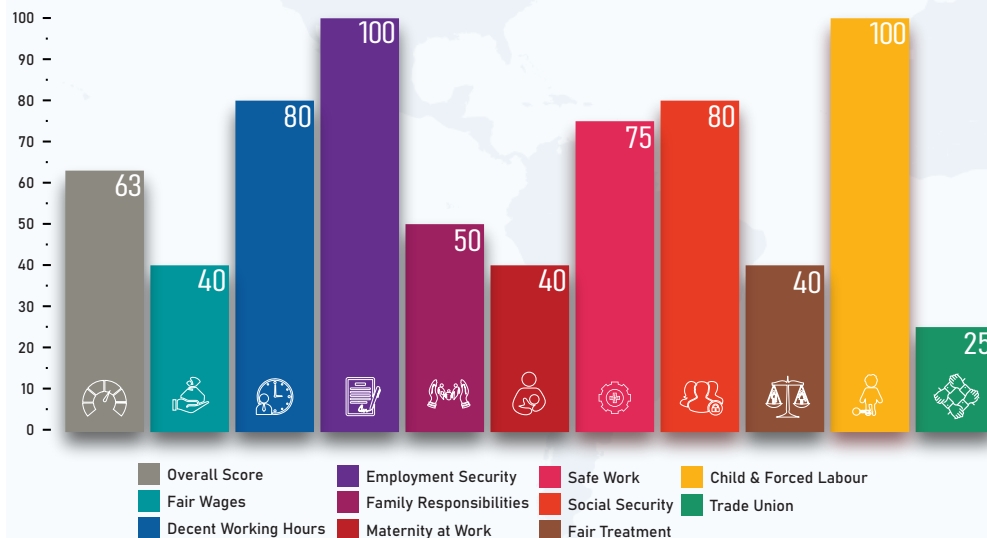




## QUICK FACTS



## LEGISLATIVE PERFORMANCE



### Indicator\*

#### 1. Fair Wages

Minimum wage (statutory or negotiated) ❌  
 Regular wage ✅  
 Overtime premium (≥125%) ✅  
 Weekly rest work compensation (time-off) ❌  
 Night work premium ❌

#### 2. Decent Working Hours

General working hours (≤48 hours per week) ✅  
 Maximum working hours (≤56 hours per week) ❌  
 Weekly rest (≥24 hours) ✅  
 Paid public holidays ✅  
 Annual leave (3 working weeks) ✅

#### 3. Employment Security

Written employment contract ✅  
 Fixed term contract (≤5 years) ✅  
 Probation period (≤3 months) ✅  
 Termination notice period (1 month) ✅  
 Severance pay (≥14 days per year of service) ✅

#### 4. Family Responsibilities

Parental leave ✅  
 Paternity leave (≥1 week) ❌  
 Flexible working arrangements ❌  
 Nursing breaks ✅

#### 5. Maternity at Work

Prohibition on inquiring about pregnancy ❌  
 Maternity leave (≥14 weeks) ❌  
 Cash maternity benefits (≥66.67% of former wage) ✅  
 Source of maternity benefits (social insurance or state financing) ❌  
 Protection from dismissals (pregnancy/maternity) ✅

### Score\*

40

❌  
 ✅  
 ✅  
 ❌  
 ❌

80

✅  
 ❌  
 ✅  
 ✅  
 ✅

100

✅  
 ✅  
 ✅  
 ✅  
 ✅

50

✅  
 ❌  
 ❌  
 ✅

40

❌  
 ❌  
 ✅  
 ❌  
 ✅

### Indicator

#### 6. Safe Work

Personal protective equipment (free of cost) ✅  
 Training on health and safety ✅  
 Restriction on work (prejudicial to health of mother or child) ❌  
 Employment injury benefits ✅

#### 7. Social Security

Old age pension ✅  
 Survivors' pension ✅  
 Unemployment benefits ✅  
 Sickness benefits (≥ 6 months) ❌  
 Invalidity benefits ✅

#### 8. Fair Treatment

Prohibition of employment discrimination ❌  
 Equal remuneration for work of equal value ❌  
 Prohibition of sexual harassment ✅  
 Absence of restrictions on women's employment ❌  
 Basic labour protections for gig workers ✅

#### 9. Child and Forced Labour

Prohibition on child labour (≤15 years) ✅  
 Age (employment entry ≥ compulsory schooling) ✅  
 Prohibition on hazardous work for under 18 ✅  
 Prohibition on forced labour ✅

#### 10. Trade Union

Right to unionise ❌  
 Right to collective bargaining ❌  
 Right to strike ❌  
 Prohibition on replacing striking workers ✅

### Score

75

✅  
 ✅  
 ❌  
 ✅

80

✅  
 ✅  
 ✅  
 ❌  
 ✅

40

❌  
 ❌  
 ✅  
 ❌  
 ✅

100

✅  
 ✅  
 ✅  
 ✅

25

❌  
 ❌  
 ❌  
 ✅

◇ Non-Standard Employment has been defined as Part-Time Employment (A) and Temporary Employment (B)  
 § Proportion of population living below the national poverty line (%), as measured under SDG 1.2.1  
 ¶ Share of informal employment in non-agriculture (%), as measured under SDG 8.3.1