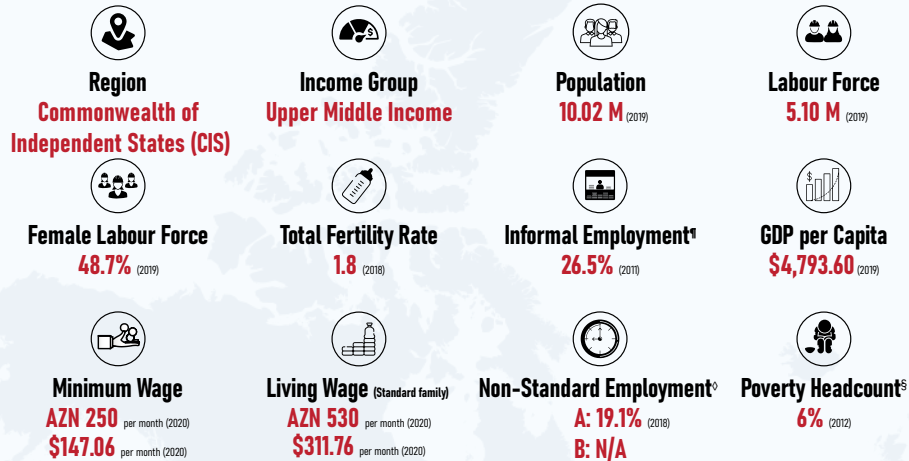


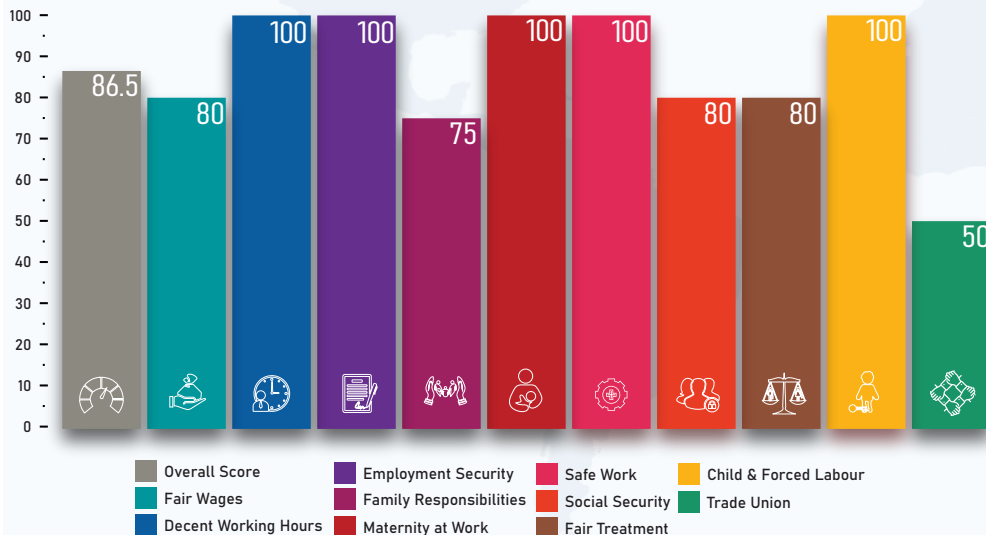


### QUICK FACTS



Source: World Bank; International Labour Organization; WageIndicator Living Wages Database

### LEGISLATIVE PERFORMANCE



### Indicator\*

#### 1. Fair Wages

- Minimum wage (statutory or negotiated) ✓
- Regular wage ✓
- Overtime premium (≥125%) ✓
- Weekly rest work compensation (time-off) ✗
- Night work premium ✓

#### 2. Decent Working Hours

- General working hours (≤48 hours per week) ✓
- Maximum working hours (≤56 hours per week) ✓
- Weekly rest (≥24 hours) ✓
- Paid public holidays ✓
- Annual leave (≥3 working weeks) ✓

#### 3. Employment Security

- Written employment contract ✓
- Fixed term contract (≤5 years) ✓
- Probation period (≤3 months) ✓
- Termination notice period (1 month) ✓
- Severance pay (≥14 days per year of service) ✓

#### 4. Family Responsibilities

- Parental leave ✓
- Paternity leave (≥1 week) ✗
- Flexible working arrangements ✓
- Nursing breaks ✓

#### 5. Maternity at Work

- Prohibition on inquiring about pregnancy ✓
- Maternity leave (≥14 weeks) ✓
- Cash maternity benefits (≥66.67% of former wage) ✓
- Source of maternity benefits (social insurance or state financing) ✓
- Protection from dismissals (pregnancy/maternity) ✓

### Score\*

80

### Indicator

#### 6. Safe Work

- Personal protective equipment (free of cost) ✓
- Training on health and safety ✓
- Restriction on work (prejudicial to health of mother or child) ✓
- Employment injury benefits ✓

100

#### 7. Social Security

- Old age pension ✓
- Survivors' pension ✓
- Unemployment benefits ✓
- Sickness benefits (≥ 6 months) ✗
- Invalidity benefits ✓

100

#### 8. Fair Treatment

- Prohibition of employment discrimination ✓
- Equal remuneration for work of equal value ✓
- Prohibition of sexual harassment ✓
- Absence of restrictions on women's employment ✗
- Basic labour protections for gig workers ✓

75

#### 9. Child and Forced Labour

- Prohibition on child labour (≤15 years) ✓
- Age (employment entry ≥ compulsory schooling) ✓
- Prohibition on hazardous work for under 18 ✓
- Prohibition on forced labour ✓

100

#### 10. Trade Union

- Right to unionise ✓
- Right to collective bargaining ✓
- Right to strike ✗
- Prohibition on replacing striking workers ✗

### Score

100

80

80

100

50

◇ Non-Standard Employment has been defined as Part-Time Employment (A) and Temporary Employment (B)  
 § Proportion of population living below the national poverty line (%), as measured under SDG 1.2.1  
 ¶ Share of informal employment in non-agriculture (%), as measured under SDG 8.3.1